

Equal Population Criterion

Ideal Population	155,463
Overall Deviation	7.4%
<div style="display: flex; justify-content: space-around;"> < 5.0% 5.0 - 10.0% > 10.0% </div>	

California Statewide Database Adjusted
(incarcerated persons reallocation) 2020
Census P.L. 94-171 Redistricting Data
Summary Files - Total Population.

Total Population & Deviation per District

District ID	Total Population	Over / Under Ideal	Deviation From Ideal
1	162,670	7,207	4.6%
2	158,588	3,125	2.0%
3	153,149	-2,314	-1.5%
4	151,191	-4,272	-2.7%
5	151,715	-3,748	-2.4%

Total Population by Race/Ethnicity per District

District ID	White	Black or African American	American Indian or Alaska Native	Asian	Native Hawaiian and Pacific Islander	Some Other Race	Two or More Races	Hispanic / Latino
1	37.2%	4.5%	0.3%	17.4%	0.5%	0.5%	4.5%	35.0%
2	23.4%	12.6%	0.3%	20.5%	0.8%	0.6%	4.7%	37.2%
3	34.9%	4.3%	0.5%	14.8%	0.7%	0.6%	4.6%	39.6%
4	11.3%	9.6%	0.5%	10.9%	0.5%	0.4%	3.0%	63.8%
5	30.6%	5.3%	0.3%	22.9%	0.8%	0.7%	5.0%	34.4%

California Statewide Database Adjusted 2020 Census P.L. 94-171 Redistricting Data Summary Files - Total Population by Race and Hispanic/Latino origin.

CVAP by Race/Ethnicity per District

District ID	White	Black or African American	American Indian or Alaska Native	Asian	Native Hawaiian and Pacific Islander	Two or More Races	Hispanic / Latino
1	51.9%	4.9%	0.4%	15.1%	0.4%	2.0%	25.3%
2	36.1%	12.4%	0.3%	19.7%	0.4%	3.3%	27.7%
3	50.1%	4.7%	0.3%	8.8%	0.9%	3.1%	31.6%
4	19.9%	14.3%	0.2%	11.9%	0.2%	2.5%	50.8%
5	44.9%	4.9%	0.3%	16.3%	0.8%	5.0%	28.0%

California Statewide Database Adjusted 2015-2019 American Community Survey Citizen Voting-age Population (CVAP) by Race and Ethnicity Special Tabulation. Rounding may lead to summation of percentages not equal to 100% (+/- 1%).

Contiguity Criterion

Are all the districts contiguous? **0**

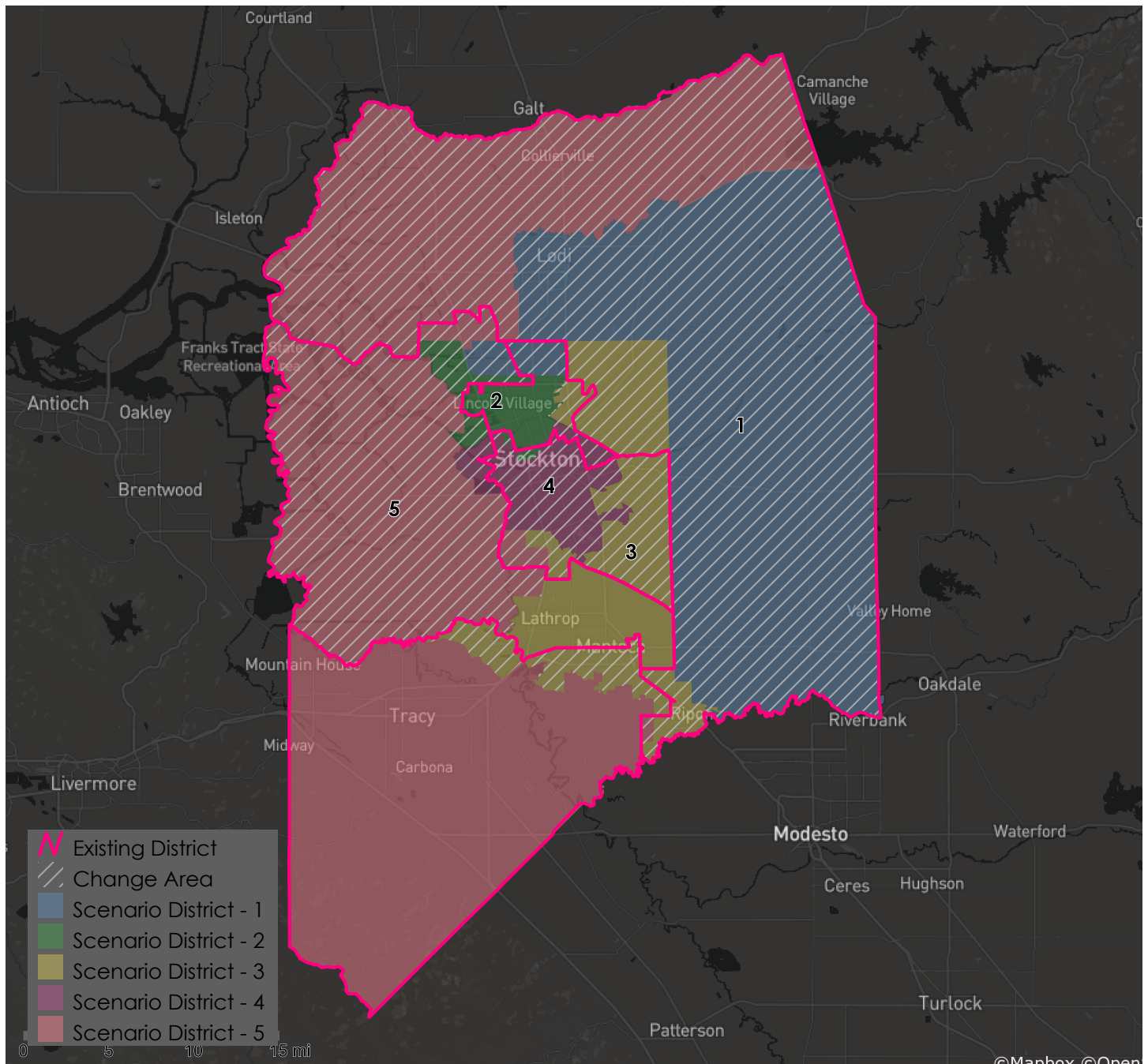
Preservation of Geographic Integrity Criteria (i.e., minimize division of cities, communities of interest, etc.)

COI Category	Total # of COIs	# of COIs Preserved in Minimum Districts	% of COIs Preserved in Minimum Districts	COIs Not Preserved in Minimum # of Districts
District COIs	7	3	43%	COMMUNITY AREA OF RIVER ISLAND AND AREA OF GROWTH, Community of Agriculture, Linden, Lodi American Viticultural Area
Cities	7	4	57%	Lathrop, Lodi, Stockton
Water Districts	47	38	81%	California Water Service (Private), City of Lathrop, City of Lodi, City of Stockton, Mokelumne Acres MD, No District, Oakwood Lake Water District (Private), Rough and Ready Storage, Spring Creek Estates MD 59
Elementary School Districts	16	7	44%	Banta Unified, Escalon Unified, Lincoln Unified, Linden Unified, Lodi Unified, Manteca Unified, Ripon Unified, Stockton Unified, Tracy Unified
General Plan Communities	32	24	75%	French Camp, Lathrop, Lodi, Manteca, Morada, Ripon, Stockton, Woodbridge
Fire Districts	25	8	32%	Clements, Colledgeville, Eastside, French Camp Mckinley, Lathrop-manteca, Liberty, Lincoln, Linden-peters, Lodi, Mokelumne, Montezuma, None, Ripon, Stockton, Tracy Rural, Waterloo-morada, Woodbridge
Reclamation Districts	51	44	86%	RD 1614, RD 17, RD 2042, RD 2058, RD 2107, RD 2119, RD 524
Municipal Advisory Councils	7	4	57%	French Camp, Morada, Woodbridge
Irrigation Districts	15	8	53%	Central San Joaquin Water Conservation District, Lathrop Irrigation District, North San Joaquin Water Conservation District, South San Joaquin Irrigation District, Stockton East Water District, Stockton East Water District / Woodbridge Irrigation District, Woodbridge Irrigation District
Port District	1	0	0%	Port District

San Joaquin County RAC

Public Scenario 55401 with District 4 VRA – Supervisorial Districts Summary Statistics

10/05/2021



Metadata

Run Date/Time: 2021-10-05 23:33:18
Workflow Directory: X:\F2096_San_Joaquin_County\Projects\Alteryx\
District Scenario: File:gdb:X:\F2096_San_Joaquin_County\Data\Redist.gdb\|Districts_Scenario_Districtr_55401
Districtr URL: <https://districtr.org/plan/59351>